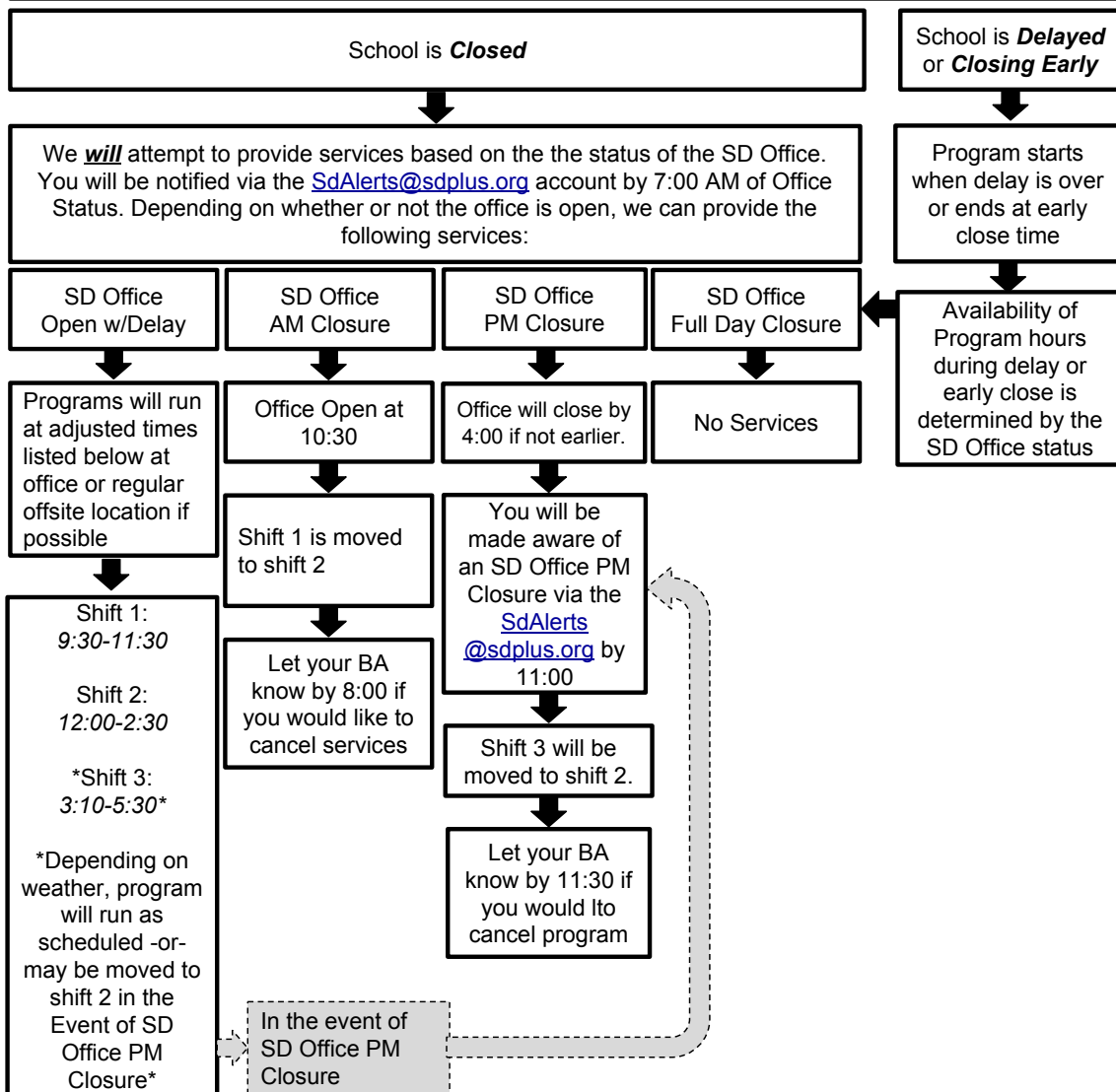


Insurance Program

If you have chosen **YES** to receiving services in the event of a weather related school closing or delay *in the district you live*, use this chart to determine the services available.

>>>Sign up for notifications from the school District to stay up to date on latest developments.<<<



Medicaid waivers (Transition ii/Aris)

If you have chosen **YES** to receiving services in the event of a weather related school closing or delay *in the district you live*, use this chart to determine the services available.

>>>Sign up for notifications from the school District to stay up to date on latest developments<<<

